

FACT BOOK
2020/03

Contents

目次	CONTENTS	・・・1
経営指標（連結）	SELECTED FINANCIAL DATA (Consolidated)	・・・2
収益性	Profitability	・・・2
安定性	Stability	・・・3
生産性・効率性	Productivity and Efficiency	・・・4
キャッシュ・フロー	Cash Flows	・・・5
投資指標	Per Share Data and Others	・・・6
財務諸表（連結）	FINANCIAL STATEMENTS (Consolidated)	・・・7
会社概要	CORPORATE INFORMATION	・・・12



Note

■ Profitability

売上高営業利益率	=	営業利益÷売上高×100
売上高経常利益率	=	経常利益÷売上高×100
売上高当期純利益率	=	当期純利益÷売上高×100
自己資本利益率	=	当期純利益÷期首・期末平均自己資本×100
総資産利益率	=	当期純利益÷期首・期末平均総資産×100

■ Stability

流動比率	=	流動資産÷流動負債×100
固定比率	=	固定資産÷自己資本×100
手元流動性比率	=	(現預金+流動資産の有価証券)÷月平均売上高
インタレスト・カバレッジ・レシオ	=	営業キャッシュ・フロー÷利払い
自己資本比率	=	自己資本÷総資産×100

■ Productivity and Efficiency

総資産回転率	=	売上高÷期首・期末平均総資産
有形固定資産回転率	=	売上高÷期首・期末平均有形固定資産

■ Cash Flows

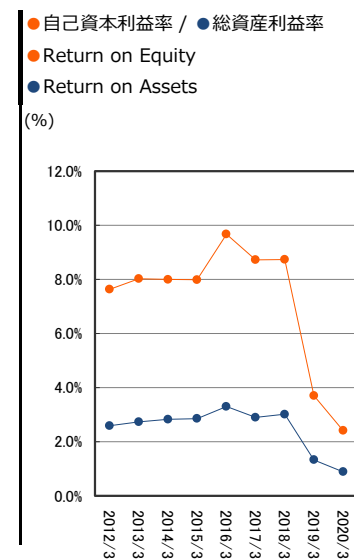
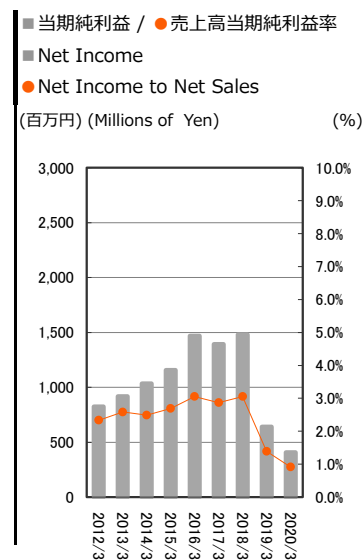
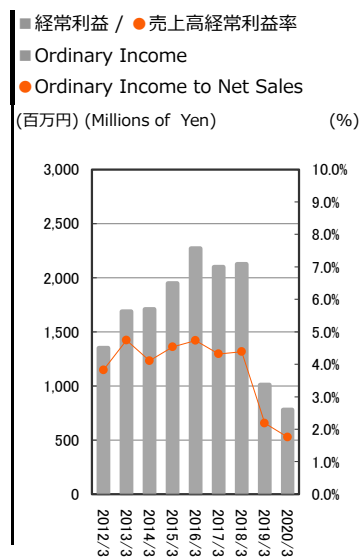
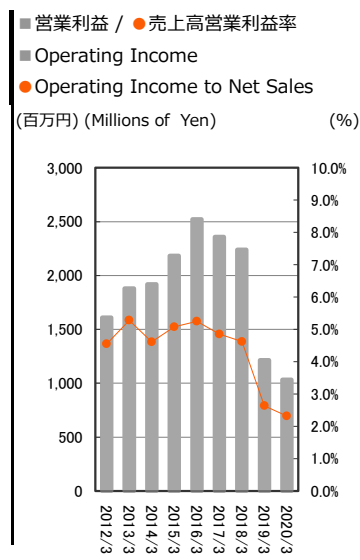
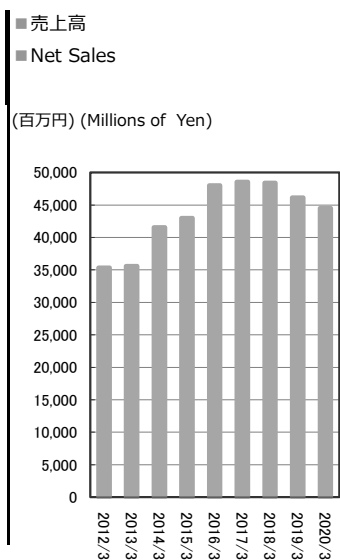
設備投資額	=	有形固定資産+無形固定資産(取得価格) ※建設仮勘定を除く
-------	---	----------------------------------

■ Per Share Data and Others

1株当たり当期純利益	=	当期純利益÷期首・期末平均発行済株式数
配当性向	=	配当金額÷当期純利益×100
1株当たり純資産	=	期末純資産÷期末発行済株式数
1株当たりキャッシュ・フロー	=	(当期純利益+減価償却費)÷期首・期末平均発行済株式数
株価収益率	=	期末株価÷1株当たり当期純利益
株価純資産倍率	=	期末株価÷1株当たり純資産

経営指標 (連結) SELECTED FINANCIAL DATA (Consolidated)

収益性 Profitability



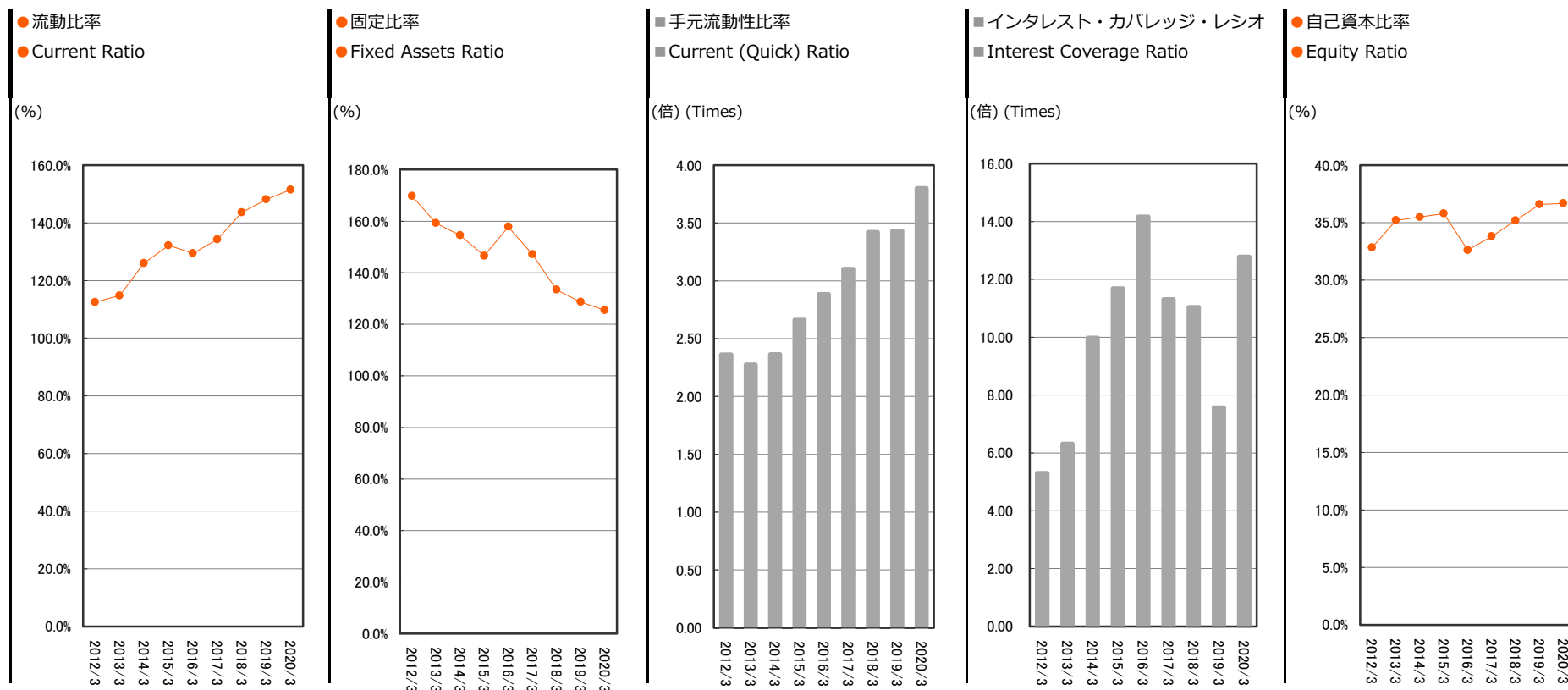
(千円) (Thousand Yen)

決算期	Fiscal Year	2012/3	2013/3	2014/3	2015/3	2016/3	2017/3	2018/3	2019/3	2020/3	増減
売上高	Net Sales	35,315,311	35,574,517	41,572,897	42,990,296	48,018,905	48,568,926	48,428,265	46,121,950	44,491,772	△ 1,630,177
営業利益	Operating Income	1,607,465	1,878,190	1,917,173	2,183,361	2,520,093	2,357,247	2,237,528	1,214,900	1,031,523	△ 183,377
売上高営業利益率 (%)	Operating Income to Net Sales (%)	4.6%	5.3%	4.6%	5.1%	5.2%	4.9%	4.6%	2.6%	2.3%	△ 0.3%
経常利益	Ordinary Income	1,350,482	1,686,459	1,707,315	1,947,834	2,269,884	2,097,437	2,124,616	1,008,822	779,705	△ 229,117
売上高経常利益率 (%)	Ordinary Income to Net Sales (%)	3.8%	4.7%	4.1%	4.5%	4.7%	4.3%	4.4%	2.2%	1.8%	△ 0.4%
当期純利益	Net Income	824,206	918,365	1,034,070	1,156,438	1,467,551	1,392,751	1,479,251	639,794	408,439	△ 231,354
売上高当期純利益率 (%)	Net Income to Net Sales (%)	2.3%	2.6%	2.5%	2.7%	3.1%	2.9%	3.1%	1.4%	0.9%	△ 0.5%
総資産	Total Assets	33,817,629	33,543,808	39,631,430	41,524,305	47,541,539	48,642,350	49,599,005	46,875,311	45,654,169	△ 1,221,142
純資産	Net Assets	11,104,109	11,807,754	14,066,762	14,882,646	15,549,429	16,502,639	17,530,746	17,246,899	16,822,368	△ 424,531
自己資本利益率 (%)	Return on Equity <ROE> (%)	7.6%	8.0%	8.0%	8.0%	9.7%	8.7%	8.7%	3.7%	2.4%	△ 1.3%
総資産利益率 (%)	Return on Assets <ROA> (%)	2.6%	2.7%	2.8%	2.8%	3.3%	2.9%	3.0%	1.3%	0.9%	△ 0.4%

経営指標 (連結)

SELECTED FINANCIAL DATA (Consolidated)

安定性 Stability



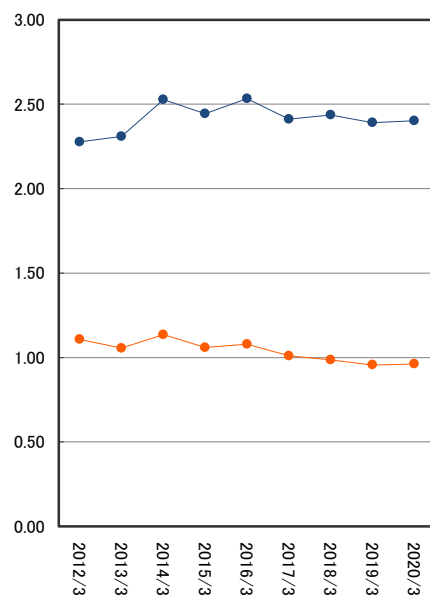
決算期	Fiscal Year	2012/3	2013/3	2014/3	2015/3	2016/3	2017/3	2018/3	2019/3	2020/3	増減
流動比率 (%)	Current Ratio (%)	112.5%	114.8%	126.0%	132.2%	129.4%	134.3%	143.7%	148.1%	151.5%	3.4%
固定比率 (%)	Fixed Assets Ratio (%)	169.7%	159.2%	154.5%	146.6%	157.8%	147.1%	133.4%	128.6%	125.4%	△3.2%
手元流動性比率 (倍)	Current (Quick) Ratio (Times)	2.36	2.28	2.36	2.66	2.88	3.10	3.42	3.43	3.80	0.37
インタレスト・カバレッジ・レシオ (倍)	Interest Coverage Ratio (Times)	5.30	6.32	9.98	11.68	14.17	11.31	11.04	7.57	12.78	5.22
自己資本比率 (%)	Equity Ratio (%)	32.8%	35.2%	35.5%	35.8%	32.6%	33.8%	35.2%	36.6%	36.7%	0.1%

経営指標 (連結)

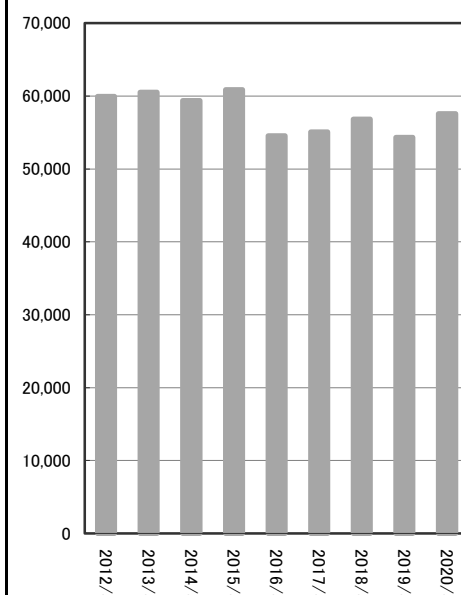
SELECTED FINANCIAL DATA (Consolidated)

生産性・効率性 Productivity and Efficiency

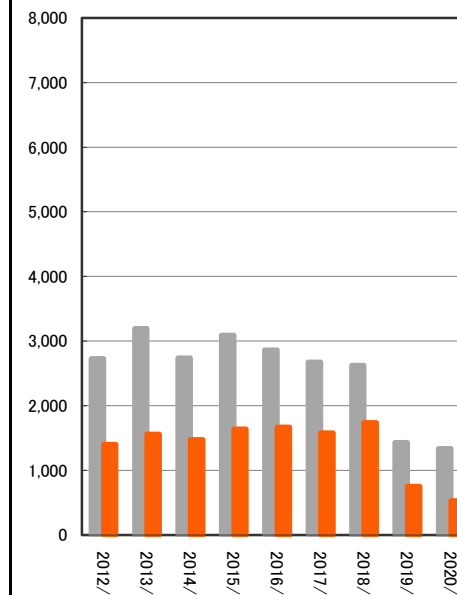
● 総資産回転率 ● 有形固定資産回転率
 Total Assets Turnover
 Tangible Fixed Assets Turnover
 (回) (Times)



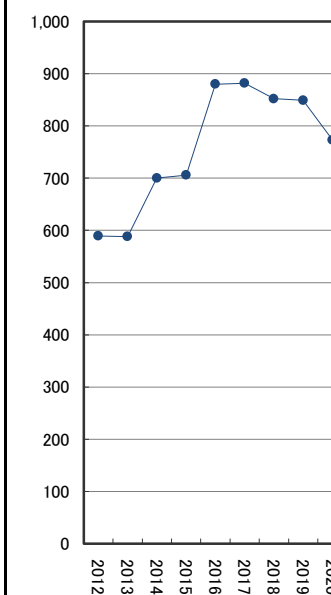
■ 従業員一人当たり売上高
 Net Sales per Employee
 (千円) (Thousand Yen)



■ 従業員一人当たり営業利益 ■ 当期純利益
 Operating Income per Employee
 Net Income per Employee
 (千円) (Thousand Yen)



● 従業員数
 Number of Employees
 (人) (Persons)



(千円) (Thousand Yen)

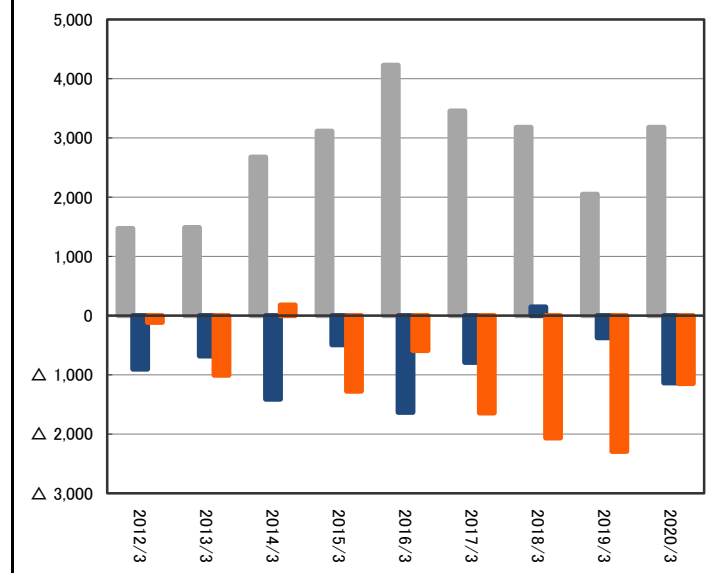
決算期	Fiscal Year	2012/3	2013/3	2014/3	2015/3	2016/3	2017/3	2018/3	2019/3	2020/3	増減
総資産回転率 (回)	Total Assets Turnover (Times)	1.11	1.06	1.14	1.06	1.08	1.01	0.99	0.96	0.96	0.01
有形固定資産回転率 (回)	Tangible Fixed Assets Turnover (Times)	2.28	2.31	2.53	2.44	2.53	2.41	2.44	2.39	2.40	0.01
従業員一人当たり売上高	Net Sales per Employee	59,958	60,500	59,389	60,892	54,566	55,066	56,840	54,325	57,557	3,232
従業員一人当たり営業利益	Operating Income per Employee	2,729	3,194	2,738	3,092	2,863	2,672	2,626	1,430	1,334	△ 96
従業員一人当たり当期純利益	Net Income per Employee	1,399	1,561	1,477	1,638	1,667	1,579	1,736	753	528	△ 225
従業員数 (人)	Number of Employees (Persons)	589	588	700	706	880	882	852	849	773	△ 76

経営指標 (連結)

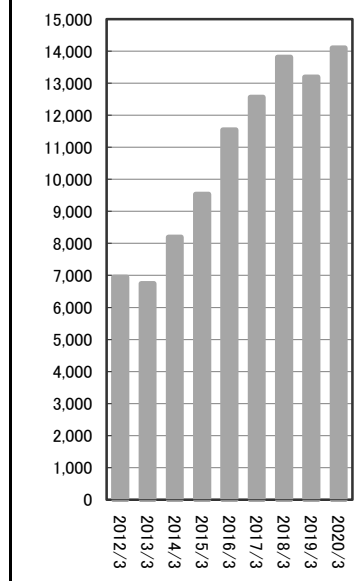
SELECTED FINANCIAL DATA (Consolidated)

キャッシュ・フロー Cash Flows

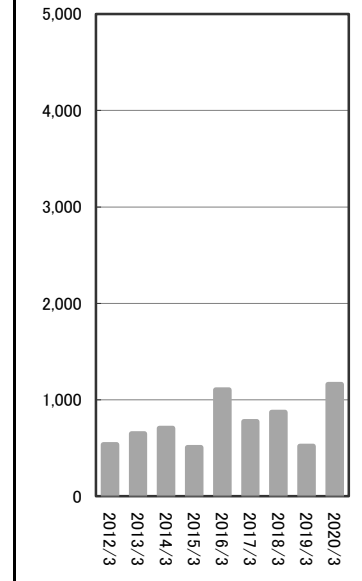
■ 営業活動によるCF ■ 投資活動によるCF ■ 財務活動によるCF
 ■ Cash Flows from Operating Activities
 ■ Cash Flows from Investing Activities
 ■ Cash Flows from Financing Activities
 (百万円) (Millions of Yen)



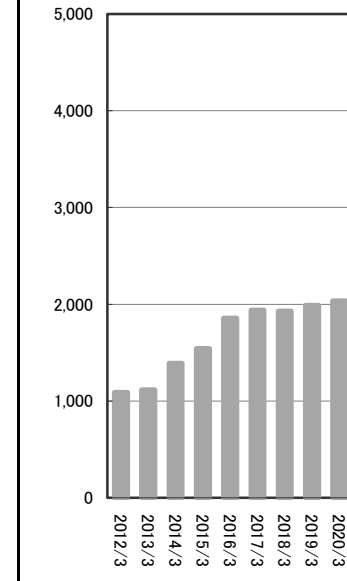
■ 現金及び現金同等物の期末残高
 ■ Cash and Cash Equivalents
 at End of Year
 (百万円) (Millions of Yen)



■ 設備投資額
 ■ Capital Expenditures
 (百万円) (Millions of Yen)



■ 減価償却費
 ■ Depreciation and Amortization
 (百万円) (Millions of Yen)



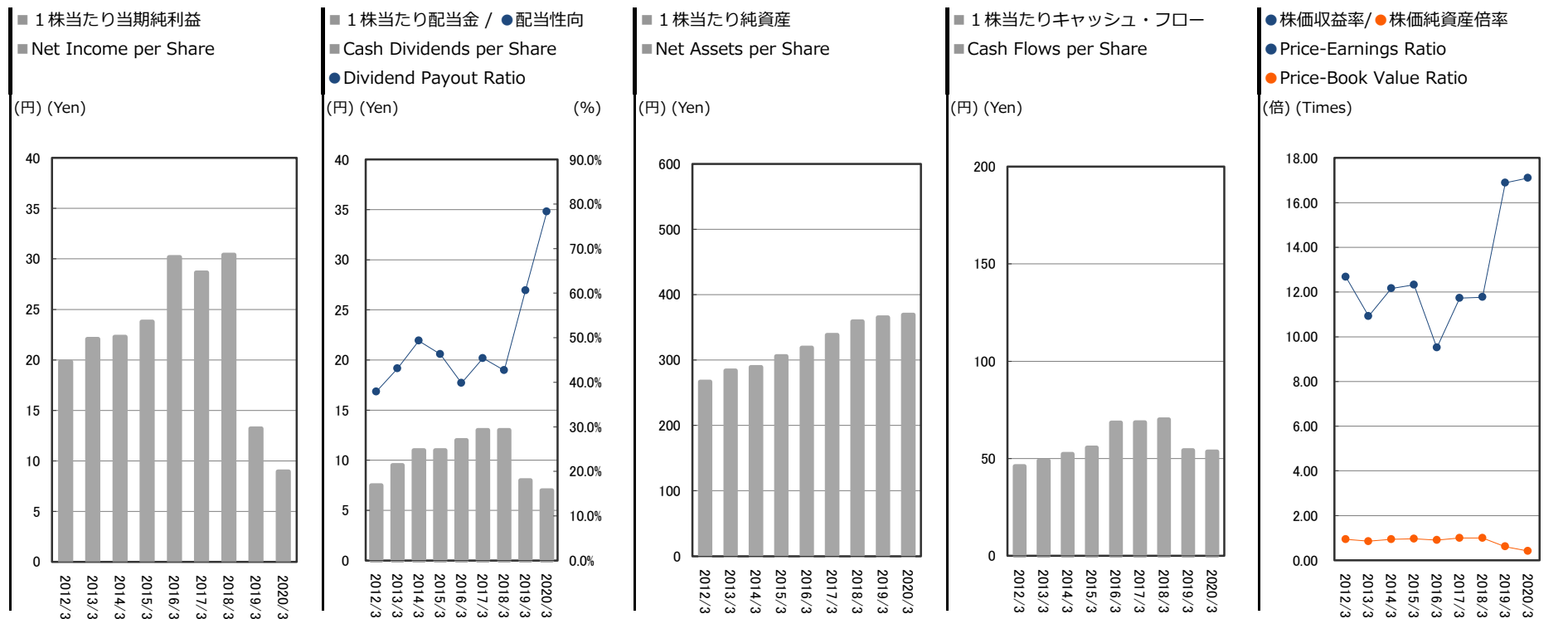
(千円) (Thousand Yen)

決算期	Fiscal Year	2012/3	2013/3	2014/3	2015/3	2016/3	2017/3	2018/3	2019/3	2020/3	増減
営業活動によるキャッシュ・フロー	Cash Flows from Operating Activities	1,467,654	1,486,662	2,677,609	3,110,320	4,227,722	3,455,281	3,178,337	2,047,269	3,179,968	1,132,699
投資活動によるキャッシュ・フロー	Cash Flows from Investing Activities	△ 905,280	△ 680,449	△ 1,410,519	△ 492,723	△ 1,633,885	△ 790,800	144,815	△ 372,696	△ 1,133,922	△ 761,225
財務活動によるキャッシュ・フロー	Cash Flows from Financing Activities	△ 113,647	△ 1,008,001	178,338	△ 1,275,623	△ 588,232	△ 1,646,953	△ 2,067,830	△ 2,292,767	△ 1,145,065	1,147,701
現金及び現金同等物の期末残高	Cash and Cash Equivalents at End of Year	6,948,645	6,746,856	8,192,285	9,534,258	11,539,862	12,557,389	13,812,712	13,194,517	14,095,497	900,980
設備投資額	Capital Expenditures	534,337	650,082	706,036	507,155	1,103,748	773,880	870,148	517,511	1,158,254	640,742
減価償却費	Depreciation and Amortization	1,090,627	1,116,814	1,390,860	1,543,788	1,856,826	1,939,861	1,928,171	1,988,780	2,037,011	48,231

経営指標 (連結)

SELECTED FINANCIAL DATA (Consolidated)

投資指標 Per Share Data and Others



決算期	Fiscal Year	2012/3	2013/3	2014/3	2015/3	2016/3	2017/3	2018/3	2019/3	2020/3	増減
1株当たり当期純利益	Net Income per Share <EPS>	19.80	22.06	22.29	23.78	30.18	28.64	30.42	13.21	8.94	△ 4.27
1株当たり配当金	Cash Dividends per Share	7.50	9.50	11.00	11.00	12.00	13.00	13.00	8.00	7.00	△ 1.00
配当性向 (%)	Dividend Payout Ratio (%)	37.9%	43.1%	49.3%	46.3%	39.8%	45.4%	42.7%	60.6%	78.3%	17.7%
1株当たり純資産	Net Assets per Share	266.73	283.64	289.26	305.62	318.84	338.11	358.76	364.86	369.27	4.42
1株当たりキャッシュ・フロー	Cash Flows per Share	46.00	48.89	52.26	55.53	68.36	68.53	70.06	54.27	53.55	△ 0.72
株価収益率 (倍)	Price-Earnings Ratio <PER> (Times)	12.68	10.92	12.16	12.32	9.51	11.73	11.77	16.88	17.11	0.23
株価純資産倍率 (倍)	Price-Book Value Ratio <PBR> (Times)	0.94	0.85	0.94	0.96	0.90	0.99	1.00	0.61	0.41	△ 0.20

財務諸表（連結） FINANCIAL STATEMENTS (Consolidated)

貸借対照表 Balance Sheets

(千円) (Thousand Yen)

決算期	Fiscal Year		2016/ 3	2017/ 3	2018/ 3	2019/ 3	2020/ 3
資産の部		Assets					
I 流動資産		I Current Assets					
1	現金及び預金	1 Cash and Deposits	11,539,862	12,557,389	13,812,712	13,194,517	14,095,497
2	受取手形及び売掛金	2 Notes and Accounts Receivable-Trade	9,145,439	9,249,939	9,884,706	9,041,029	7,660,179
3	電子記録債権	3 Electronically Recorded Monetary Claims - Operating	964,574	1,087,918	1,291,227	1,174,949	1,552,525
4	たな卸資産	4 Inventories	1,128,310	1,193,662	1,162,018	1,174,322	1,157,046
5	繰延税金資産	5 Deferred Tax Assets	243,426	203,494	—	—	—
6	その他	6 Other	196,912	207,839	206,098	257,091	199,335
	貸倒引当金	Allowance for Doubtful Accounts	△ 147,085	△ 51,672	△ 40,827	△ 30,861	△ 18,900
流動資産合計		Total Current Assets	23,071,439 48.5%	24,448,571 50.3%	26,315,935 53.1%	24,811,048 52.9%	24,645,684 54.0%
II 固定資産		II Non-Current Assets					
1 有形固定資産		1 Property, Plant and Equipment					
(1)	建物及び構築物	(1) Buildings and Structures	6,703,061	6,413,115	6,801,488	6,517,990	6,318,061
(2)	機械装置及び運搬具	(2) Machinery, Equipment and Vehicles	2,079,249	1,801,275	1,627,510	1,399,047	1,258,523
(3)	土地	(3) Land	5,794,845	5,794,845	5,768,532	5,806,485	6,149,853
(4)	リース資産	(4) Leased Assets	5,458,203	5,360,401	5,350,079	4,885,223	4,004,448
(5)	建設仮勘定	(5) Construction in Progress	—	500,000	4,000	84,680	204,490
(6)	その他	(6) Other	197,122	174,870	149,351	177,292	239,734
有形固定資産合計		Total Property, Plant and Equipment	20,232,482 42.6%	20,044,508 41.2%	19,700,961 39.7%	18,870,720 40.3%	18,175,111 39.8%
2 無形固定資産		2 Intangible Assets					
(1)	のれん	(1) Goodwill	1,863,418	1,657,831	1,452,245	1,246,659	1,041,072
(2)	その他	(2) Other	119,128	107,508	101,852	100,667	165,188
無形固定資産合計		Total Intangible Assets	1,982,547 4.2%	1,765,340 3.6%	1,554,097 3.1%	1,347,326 2.9%	1,206,261 2.6%
3 投資その他の資産		3 Investments and Other Assets					
(1)	投資有価証券	(1) Investment Securities	1,177,462	1,395,280	1,475,690	1,264,013	1,029,299
(2)	繰延税金資産	(2) Deferred Tax Assets	195,291	118,079	268,439	280,202	328,397
(3)	退職給付に係る資産	(3) Retirement Benefit Asset	7,225	9,805	13,226	16,853	14,677
(4)	その他	(4) Other	1,084,829	897,988	292,935	305,991	275,471
	貸倒引当金	Allowance for Doubtful Accounts	△ 211,764	△ 37,380	△ 22,282	△ 20,844	△ 20,734
投資その他の資産合計		Total Investments and Other Assets	2,253,043 4.7%	2,383,772 4.9%	2,028,009 4.1%	1,846,216 3.9%	1,627,111 3.6%
固定資産合計		Total Non-Current Assets	24,468,073 51.5%	24,193,621 49.7%	23,283,069 46.9%	22,064,262 47.1%	21,008,485 46.0%
III 繰延資産		III Deferred Assets					
	株式交付費	Share Issuance Costs	2,026	157	—	—	—
繰延資産合計		Total Deferred Assets	2,026 0.0%	157 0.0%	—	—	—
資産合計		Total Assets	47,541,539 100%	48,642,350 100%	49,599,005 100%	46,875,311 100%	45,654,169 100%

財務諸表（連結）

FINANCIAL STATEMENTS (Consolidated)

貸借対照表 Balance Sheets

(千円) (Thousand Yen)

決算期	Fiscal Year	2016/ 3	2017/ 3	2018/ 3	2019/ 3	2020/ 3	
負債の部		Liabilities					
I 流動負債		I Current Liabilities					
1	支払手形及び買掛金	1 Notes and Accounts Payable-Trade	5,428,957	5,528,304	5,677,227	4,978,578	4,262,752
2	電子記録債務	2 Electronically Recorded Obligations - Operating	4,943,872	5,009,199	5,083,002	4,499,563	4,689,242
3	短期借入金	3 Short-Term Borrowings	600,000	600,000	450,000	450,000	450,000
4	1年内償還予定の社債	4 Current Portion of Bonds Payable	34,000	32,000	—	—	—
5	1年内返済予定の長期借入金	5 Current Portion of Long-Term Borrowings	3,947,286	4,090,125	4,000,075	3,969,996	4,262,560
6	リース債務	6 Lease Obligations	925,493	1,014,171	1,133,906	1,236,121	1,052,195
7	未払法人税等	7 Income Taxes Payable	495,492	274,059	549,316	67,649	141,170
8	賞与引当金	8 Provision for Bonuses	373,018	384,268	378,383	377,042	325,002
9	その他	9 Other	1,074,549	1,277,732	1,046,869	1,173,484	1,083,166
流動負債合計		Total Current Liabilities	17,822,668 37.5%	18,209,860 37.4%	18,318,781 36.9%	16,752,435 35.7%	16,266,089 35.6%
II 固定負債		II Non-Current Liabilities					
1	社債	1 Bonds Payable	32,000	—	—	—	—
2	長期借入金	2 Long-Term Borrowings	7,924,948	7,804,657	7,706,142	7,486,896	8,015,281
3	リース債務	3 Lease Obligations	5,131,435	5,001,907	4,908,705	4,330,435	3,531,874
4	繰延税金負債	4 Deferred tax Liabilities	57,052	49,437	17,287	25,898	21,968
5	退職給付に係る負債	5 Retirement Benefit Liability	903,017	980,817	1,033,558	958,849	931,967
6	資産除去債務	6 Asset Retirement Obligations	31,559	32,138	32,727	33,328	33,940
7	その他	7 Other	89,428	60,894	51,056	40,568	30,679
固定負債合計		Total Non-Current Liabilities	14,169,440 29.8%	13,929,851 28.6%	13,749,477 27.7%	12,875,976 27.5%	12,565,711 27.5%
負債合計		Total Liabilities	31,992,109 67.3%	32,139,711 66.1%	32,068,258 64.7%	29,628,412 63.2%	28,831,801 63.2%
純資産の部		Net Assets					
I 株主資本		I Shareholders' Equity					
1	資本金	1 Share Capital	3,335,810	3,335,810	3,338,490	3,344,545	3,359,027
2	資本剰余金	2 Capital Surplus	3,329,940	3,329,940	3,332,620	3,338,675	3,353,157
3	利益剰余金	3 Retained Earnings	8,559,298	9,319,861	10,166,892	10,295,775	10,357,448
4	自己株式	4 Treasury Shares	△ 27	△ 27	△ 27	△ 355,862	△ 700,023
株主資本合計		Total Shareholders' Equity	15,225,020 32.0%	15,985,583 32.9%	16,837,975 33.9%	16,623,133 35.5%	16,369,609 35.9%
II その他の包括利益累計額		II Accumulated Other Comprehensive Income					
その他有価証券評価差額金		Valuation Difference on Available-for-Sale Securities	484,204	648,648	774,048	591,364	410,235
退職給付に係る調整累計額		Remeasurements of Defined Benefit Plans	△ 203,969	△ 191,806	△ 160,061	△ 63,579	△ 31,977
その他の包括利益累計額合計		Total Accumulated Other Comprehensive Income	280,234 0.6%	456,842 0.9%	613,987 1.2%	527,784 1.1%	378,258 0.8%
III 新株予約権		III Share Acquisition Rights					
純資産合計		Total Net Assets	15,549,429 32.7%	16,502,639 33.9%	17,530,746 35.3%	17,246,899 36.8%	16,822,368 36.8%
負債純資産合計		Total Liabilities and Net Assets	47,541,539 100%	48,642,350 100%	49,599,005 100%	46,875,311 100%	45,654,169 100%

財務諸表（連結）

FINANCIAL STATEMENTS (Consolidated)

損益計算書 Statements of Income

(千円) (Thousand Yen)

決算期	Fiscal Year		2016/ 3	2017/ 3	2018/ 3	2019/ 3	2020/ 3					
I 売上高	I Net Sales		48,018,905	100%	48,568,926	100%	48,428,265	100%	46,121,950	100%	44,491,772	100%
II 売上原価	II Cost of Sales		41,126,698	85.6%	41,759,308	86.0%	41,691,218	86.1%	40,446,228	87.7%	39,426,508	88.6%
売上総利益	Gross Profit		6,892,206		6,809,618		6,737,047		5,675,721		5,065,263	
III 販売費及び一般管理費	III Selling, General and Administrative Expenses											
1 運賃	1 Freight Costs		1,077,638		1,073,351		1,066,041		1,080,202		1,029,855	
2 給料及び手当	2 Salaries and Allowances		1,174,533		1,244,311		1,238,150		1,232,461		1,113,659	
3 賞与引当金繰入額	3 Provision for Bonuses		128,168		142,095		150,322		140,644		107,644	
4 退職給付費用	4 Retirement Benefit Expenses		30,848		55,191		57,038		51,077		45,518	
5 貸倒引当金繰入額	5 Provision of Allowance for Doubtful Accounts		1,910		△ 81,229		△ 11,770		△ 9,563		△ 9,612	
6 のれん償却額	6 Amortization of Goodwill		197,381		205,586		205,586		205,586		205,586	
7 その他	7 Other		1,761,631		1,813,063		1,794,150		1,760,411		1,541,088	
営業利益	Operating Income		2,520,093	5.2%	2,357,247	4.9%	2,237,528	4.6%	1,214,900	2.6%	1,031,523	2.3%
IV 営業外収益	IV Non-Operating Income											
1 受取配当金	1 Dividends Income		27,489		30,464		29,082		27,443		28,987	
2 補助金収入	2 Subsidy Income		—		11,180		—		—		—	
3 産業立地交付金	3 Subsidy for Industrial Estate		7,690		—		144,682		25,895		9,941	
4 保険解約返戻金	4 Surrender Value of Insurance Policies		5,815		—		—		—		—	
5 その他	5 Other		14,320		8,726		13,670		15,631		9,642	
V 営業外費用	V Non-Operating Expenses											
1 支払利息	1 Interest Expenses		297,454		304,808		289,092		270,152		246,992	
2 その他	2 Other		8,068		5,371		11,254		4,895		53,397	
経常利益	Ordinary Income		2,269,884	4.7%	2,097,437	4.3%	2,124,616	4.4%	1,008,822	2.2%	779,705	1.8%
VI 特別利益	VI Extraordinary Income											
1 固定資産売却益	1 Gain on Sales of Non-Current Assets		—		17		1,430		1,166		11,293	
2 投資有価証券売却益	2 Gain on Sales of Investment Securities		14,123		—		178,409		86,899		—	
3 新株予約権戻入益	3 Gain on Reversal of Share Acquisition Rights		—		642		—		9,440		86	
VII 特別損失	VII Extraordinary Losses											
1 固定資産売却損	1 Loss on Sales of Non-Current Assets		—		—		—		—		4,094	
2 固定資産除却損	2 Loss on Retirement of Non-Current Assets		26,935		48,511		11,830		35,321		32,062	
3 投資有価証券売却損	3 Loss on sales of investment securities		—		1,446		23,981		—		—	
4 減損損失	4 Impairment Loss		—		—		—		—		23,118	
5 その他	5 Other		10,787		4,054		756		1,850		2,833	
税金等調整前当期純利益	Profit Before Income Taxes		2,246,286	4.7%	2,044,086	4.2%	2,267,888	4.7%	1,069,157	2.3%	728,976	1.6%
法人税、住民税及び事業税	Income Taxes-Current		772,326		597,119		833,850		424,525		322,414	
法人税等調整額	Income Taxes-Deferred		6,407		54,215		△ 45,213		4,837		△ 1,877	
当期純利益	Profit		1,467,551	3.1%	1,392,751	2.9%	1,479,251	3.1%	639,794	1.4%	408,439	0.9%
Ⅷ 親会社株主に帰属する当期純利益	Ⅷ Profit Attributable to Owners of Parent		1,467,551	3.1%	1,392,751	2.9%	1,479,251	3.1%	639,794	1.4%	408,439	0.9%

財務諸表（連結） FINANCIAL STATEMENTS (Consolidated)

キャッシュ・フロー計算書 Statements of Cash Flows

(千円) (Thousand Yen)

決算期	Fiscal Year	2016/ 3	2017/ 3	2018/ 3	2019/ 3	2020/ 3
I 営業活動によるキャッシュ・フロー	I Cash Flows from Operating Activities					
税金等調整前当期純利益	Profit Before Income Taxes	2,246,286	2,044,086	2,267,888	1,069,157	728,976
減価償却費	Depreciation	1,856,826	1,939,861	1,928,171	1,988,780	2,037,011
のれん償却額	Amortization of Goodwill	197,381	205,586	205,586	205,586	205,586
産業立地交付金	Subsidy for Industrial Estate	—	—	△ 144,682	△ 25,895	△ 9,941
貸倒引当金の増減額(△は減少)	Increase (Decrease) in Allowance for Doubtful Accounts	△ 907	△ 269,797	△ 25,942	△ 11,405	△ 12,071
賞与引当金の増減額(△は減少)	Increase (Decrease) in Provision for Bonuses	△ 3,369	11,250	△ 5,884	△ 1,340	△ 52,040
退職給付に係る負債の増減額(△は減少)	Increase (Decrease) in Retirement Benefit Liability	18,464	95,331	98,496	64,353	18,667
受取利息及び受取配当金	Interest and Dividends Income	△ 27,917	△ 30,524	△ 29,133	△ 27,500	△ 29,037
支払利息	Interest Expenses	297,454	304,808	289,092	270,152	246,992
固定資産売却損益(△は益)	Loss (Gain) on Sales of Non-Current Assets	—	△ 17	△ 1,430	△ 1,166	△ 7,198
固定資産除却損	Loss on Retirement of Non-Current Assets	26,935	48,511	11,830	35,321	32,062
減損損失	Impairment Loss	—	—	—	—	23,118
投資有価証券売却損益(△は益)	Loss (Gain) on Sales of Investment Securities	△ 14,123	1,446	△ 154,427	△ 86,899	—
売上債権の増減額(△は増加)	Decrease (Increase) in Trade Receivables	△ 483,396	△ 227,844	△ 838,076	959,955	1,003,273
たな卸資産の増減額(△は増加)	Decrease (Increase) in Inventories	138,001	△ 65,352	31,643	△ 12,304	17,276
仕入債務の増減額(△は減少)	Increase (Decrease) in Trade Payables	943,653	164,674	222,726	△ 1,282,088	△ 526,146
未収入金の増減額(△は増加)	Decrease (Increase) in Accounts Receivable-Other	△ 711	△ 16,736	7,568	△ 18,657	38,229
未払金の増減額(△は減少)	Increase (Decrease) in Accounts Payable-Other	29,804	15,738	107,572	△ 43,763	△ 86,917
未払費用の増減額(△は減少)	Increase (Decrease) in Accrued Expenses	△ 34,065	4,956	206	7,643	△ 31,272
未払消費税等の増減額(△は減少)	Increase (Decrease) in Accrued Consumption Taxes	△ 116,840	139,468	△ 35,079	112,431	56,805
前払費用の増減額(△は増加)	Decrease (Increase) in Prepaid Expenses	△ 9,588	△ 3,885	△ 9,456	△ 13,513	7,810
破産更生債権等の増減額(△は増加)	Decrease (Increase) in Distressed Receivables	131	183,734	14,833	1,456	110
その他	Other, Net	49,578	30,563	44,578	2,628	△ 27,020
小計	Subtotal	5,113,597	4,575,859	3,986,081	3,192,931	3,634,273
利息及び配当金の受取額	Interest and Dividends Income Received	27,917	31,224	31,013	28,680	29,057
利息の支払額	Interest Paid	△ 298,317	△ 305,507	△ 288,009	△ 270,565	△ 248,745
法人税等の支払額	Income Taxes Paid	△ 615,475	△ 846,294	△ 550,748	△ 903,777	△ 234,617
営業活動によるキャッシュ・フロー	Net Cash Provided by (Used in) Operating Activities:	4,227,722	3,455,281	3,178,337	2,047,269	3,179,968

財務諸表（連結） FINANCIAL STATEMENTS (Consolidated)

キャッシュ・フロー計算書 Statements of Cash Flows

(千円) (Thousand Yen)

決算期	Fiscal Year	2016/ 3	2017/ 3	2018/ 3	2019/ 3	2020/ 3
II 投資活動によるキャッシュ・フロー		II Cash Flows from Investing Activities				
定期預金の預入による支出	Payments into Time Deposits	△ 107,500	—	—	—	—
定期預金の払戻による収入	Proceeds from Withdrawal of Time Deposits	304,005	—	—	—	—
有形固定資産の取得による支出	Purchase of Property, Plant and Equipment	△ 1,077,900	△ 768,972	△ 836,470	△ 491,911	△ 1,070,764
無形固定資産の取得による支出	Purchase of Intangible Assets	△ 25,848	△ 4,907	△ 33,678	△ 25,599	△ 87,489
投資有価証券の取得による支出	Purchase of Investment Securities	△ 12,207	△ 12,838	△ 13,127	△ 51,114	△ 10,630
投資有価証券の売却による収入	Proceeds from Sales of Investment Securities	30,683	4,449	262,094	115,256	—
保険積立金の解約による収入	Proceeds from Cancellation of Insurance Funds	30,599	433	594,702	—	—
産業立地交付金の受取による収入	Proceeds from Subsidies for Industrial Estate	—	—	144,682	25,895	9,941
連結の範囲の変更を伴う 子会社株式の取得による支出	Purchase of Shares of Subsidiaries Resulting in Change in Scope of Consolidation	△ 778,198	—	—	—	—
その他	Other, Net	2,480	△ 8,965	26,611	54,776	25,021
投資活動によるキャッシュ・フロー	Net Cash Provided by (Used in) Investing Activities	△ 1,633,885	△ 790,800	144,815	△ 372,696	△ 1,133,922
III 財務活動によるキャッシュ・フロー		III Cash Flows from Financing Activities				
短期借入金の純増減額（△は減少）	Net Increase (Decrease) in Short-Term Borrowings	270,000	—	△ 150,000	—	—
長期借入れによる収入	Proceeds From Long-Term Loans Borrowings	5,220,000	4,800,000	4,350,000	4,200,000	5,400,000
長期借入金の返済による支出	Repayment of Long-Term Borrowings	△ 4,091,586	△ 4,777,452	△ 4,538,565	△ 4,449,325	△ 4,579,051
配当金の支払額	Dividends Paid	△ 534,625	△ 632,516	△ 632,259	△ 511,111	△ 347,154
リース債務の返済による支出	Repayments of Lease Obligations	△ 837,302	△ 980,036	△ 1,051,065	△ 1,177,039	△ 1,264,966
長期設備未払金の支払いによる支出	Payments for Accrued Amount Payable for Capital Investment	△ 547,718	△ 22,948	△ 18,349	△ 9,888	△ 9,888
社債の償還による支出	Redemption of Bonds	△ 67,000	△ 34,000	△ 32,000	—	—
その他	Other, Net	—	—	4,409	△ 345,403	△ 344,006
財務活動によるキャッシュ・フロー	Net Cash Provided by (Used in) Financing Activities	△ 588,232	△ 1,646,953	△ 2,067,830	△ 2,292,767	△ 1,145,065
IV 現金及び現金同等物の増減額(△は減少)	IV Net Increase (Decrease) in Cash and Cash Equivalents	2,005,604	1,017,527	1,255,322	△ 618,194	900,980
V 現金及び現金同等物の期首残高	V Cash and Cash Equivalents at Beginning of Period	9,534,258	11,539,862	12,557,389	13,812,712	13,194,517
VI 現金及び現金同等物の期末残高	VI Cash and Cash Equivalents at End of Period	11,539,862	12,557,389	13,812,712	13,194,517	14,095,497

■ Corporate Information

Trade Name	Kyoritsu Printing Co.,Ltd.
Established	August 1st, 1980
Capital	3,359,027,500 Yen
Number of Full-time Employees	773
Stock Exchange Listed	The First Section of the Tokyo Stock Exchange [7838]
Number of Shareholders	11,428
Head Office	36-1, Shimizu-cho, Itabashi-ku, Tokyo 03-5248-7800
Office	Sapporo / Nagoya / Osaka / Takamatsu / Fukuoka
Printing Factory	Honjo First Factory / Honjo Second Factory Honjo Third Factory / Direct-Mail Service Center
Binding Factory	Honjo Fourth Factory / Kodama Fifth Factory Kodama Sixth Factory / Kodama Seventh Factory



■ Officers

CEO	Katsunori Noda
COO	Shoya Sato
Director and Executive Vice President	Tetsuo Nakai
Director	Toshikatsu Funaki
Director	Yutaka Kageyama
Outside Director	Michio Fujimoto
Outside Director	Masahiko Kamei
Standing Outside Auditor	Kenzo Kawajiri
Outside Auditor	Hidekazu Kubokawa
Outside Auditor	Keiichiro Nakamura
Senior Executive Officer	Noriaki Tajima
Executive Officer	Naoyuki Kumakiri
Executive Officer	Michihito Kumazawa
Executive Officer	Takashi Akutsu
Executive Officer	Masahide Tasaka

■ 会社概要

商号	共立印刷株式会社
設立	1980年8月1日
資本金	33億5,902万円
従業員数	773名
上場取引所	東京証券取引所 市場第一部 [7838]
株主数	11,428名
本社	東京都板橋区清水町36番 1号 03-5248-7800
営業所	札幌 / 名古屋 / 大阪 / 高松 / 福岡
印刷工場	本庄第 1 工場 / 本庄第 2 工場 本庄第 3 工場 / 情報出力センター
製本工場	本庄第 4 工場 / 児玉第 5 工場 児玉第 6 工場 / 児玉第 7 工場

■ 役員

代表取締役会長	野田 勝憲
代表取締役社長	佐藤 尚哉
取締役副社長	中井 哲雄
取締役	舩木 敏勝
取締役	景山 豊
社外取締役	藤本 三千夫
社外取締役	亀井 雅彦
常勤社外監査役	川尻 建三
社外監査役	窪川 秀一
社外監査役	中村 恵一郎
上級執行役員	田島 紀明
執行役員	熊切 直之
執行役員	熊澤 通人
執行役員	阿久津 貴志
執行役員	田坂 優英