

A large, stylized blue brushstroke graphic that originates from the bottom left and sweeps upwards and to the right, ending near the top right of the page. It consists of several overlapping, elongated, teardrop-like shapes that create a sense of motion and energy.

FACT BOOK
2023/03

Contents

目次	CONTENTS	
経営指標（連結）	SELECTED FINANCIAL DATA (Consolidated)	
収益性	Profitability	・・・2
安定性	Stability	・・・3
生産性・効率性	Productivity and Efficiency	・・・4
キャッシュ・フロー	Cash Flows	・・・5
投資指標	Per Share Data and Others	・・・6
財務諸表（連結）	FINANCIAL STATEMENTS (Consolidated)	・・・7
会社概要	CORPORATE INFORMATION	・・・12



当社グループは、2022年10月1日に株式会社KYORITSU（証券コード：7795）を親会社とする持株会社体制に移行しております。本資料につきまして、2022年3月期以前の情報は、共立印刷株式会社（証券コード：7838）のものとなります。

・・・1

Note

■ Profitability (収益性)

売上高営業利益率	=	営業利益÷売上高×100
売上高経常利益率	=	経常利益÷売上高×100
売上高当期純利益率	=	当期純利益÷売上高×100
自己資本利益率<ROE>	=	当期純利益÷期首・期末平均自己資本×100
総資産利益率<ROA>	=	当期純利益÷期首・期末平均総資産×100

■ Stability (安定性)

流動比率	=	流動資産÷流動負債×100
固定比率	=	固定資産÷自己資本×100
手元流動性比率	=	(現預金+流動資産の有価証券)÷月平均売上高
インタレスト・カバレッジ・レシオ	=	営業キャッシュ・フロー÷利払い
自己資本比率	=	自己資本÷総資産×100

■ Productivity and Efficiency (生産性・効率性)

総資産回転率	=	売上高÷期首・期末平均総資産
有形固定資産回転率	=	売上高÷期首・期末平均有形固定資産

■ Cash Flows (キャッシュ・フロー)

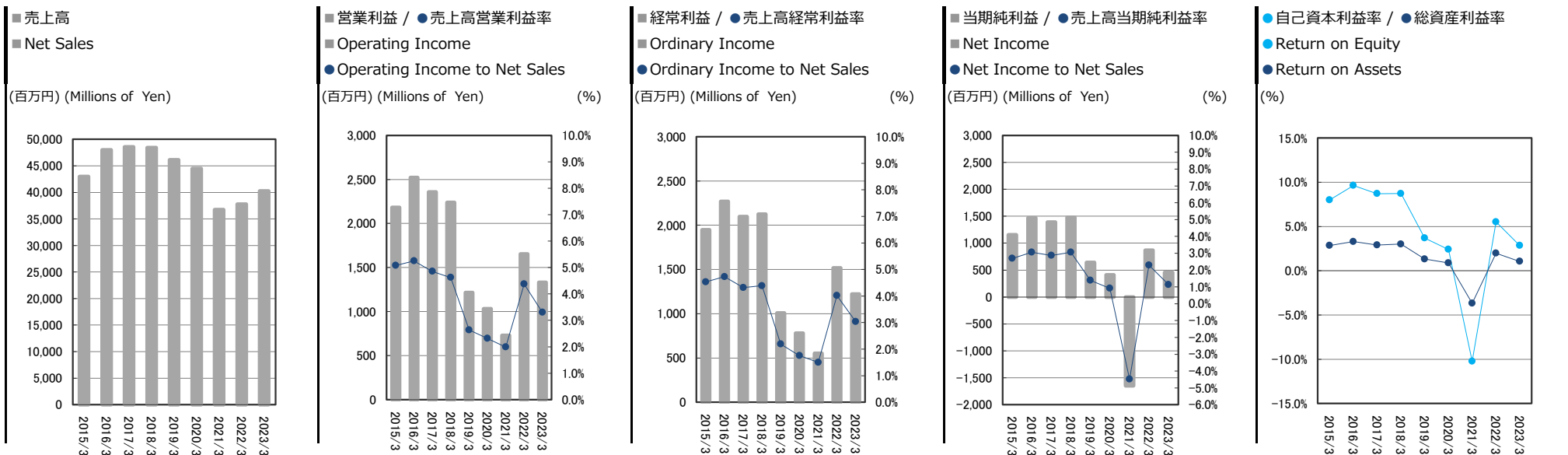
設備投資額	=	有形固定資産+無形固定資産(取得価格)
		※建設仮勘定を除く

■ Per Share Data and Others (投資指標)

1株当たり当期純利益	=	当期純利益÷期首・期末平均発行済株式数
配当性向	=	配当金額÷当期純利益×100
1株当たり純資産	=	期末純資産÷期末発行済株式数
1株当たりキャッシュ・フロー	=	(当期純利益+減価償却費)÷期首・期末平均発行済株式数
株価収益率<PER>	=	期末株価÷1株当たり当期純利益
株価純資産倍率<PBR>	=	期末株価÷1株当たり純資産

経営指標 (連結) SELECTED FINANCIAL DATA (Consolidated)

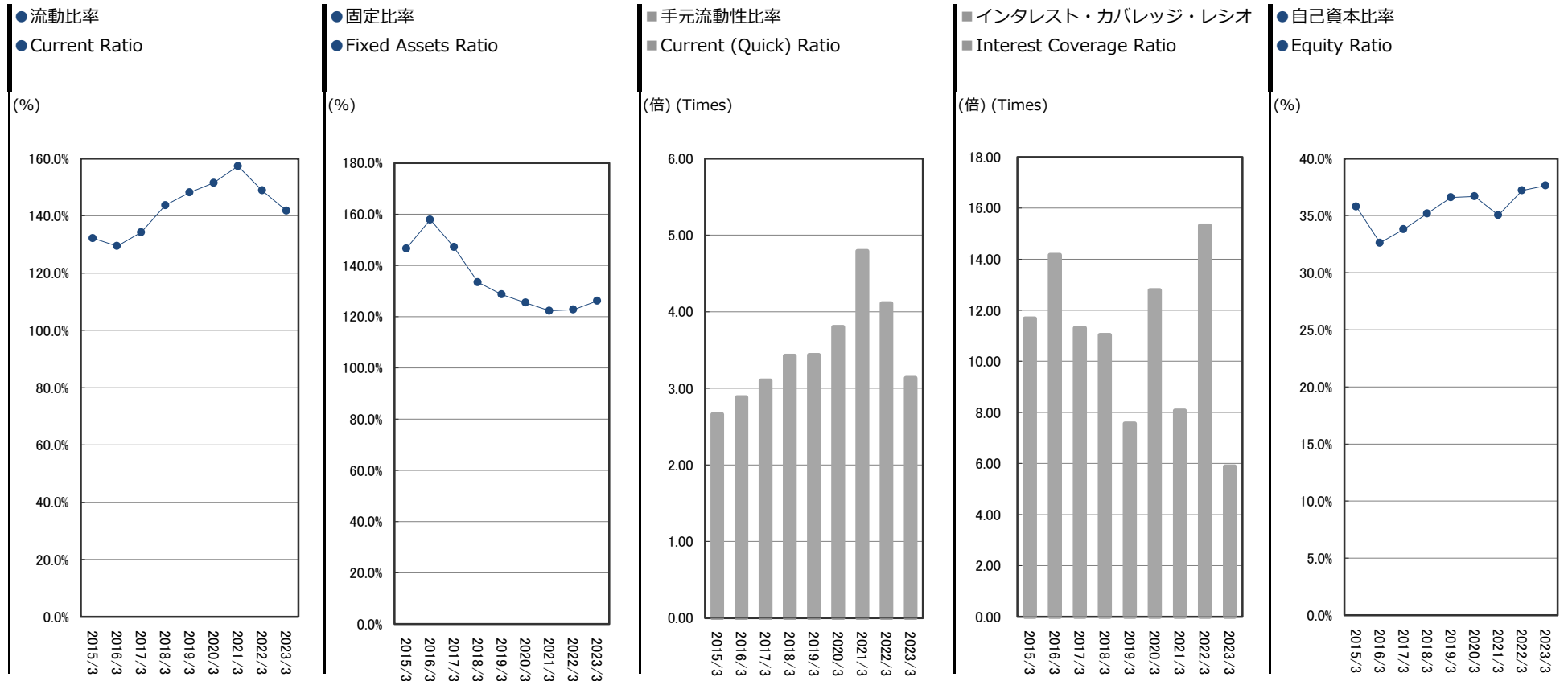
収益性 Profitability



(千円) (Thousand Yen)

決算期	Fiscal Year	2015/3	2016/3	2017/3	2018/3	2019/3	2020/3	2021/3	2022/3	2023/3	増減
売上高	Net Sales	42,990,296	48,018,905	48,568,926	48,428,265	46,121,950	44,491,772	36,739,929	37,795,726	40,263,547	2,467,820
営業利益	Operating Income	2,183,361	2,520,093	2,357,247	2,237,528	1,214,900	1,031,523	730,072	1,652,074	1,330,814	△ 321,260
売上高営業利益率 (%)	Operating Income to Net Sales (%)	5.1%	5.2%	4.9%	4.6%	2.6%	2.3%	2.0%	4.4%	3.3%	△ 1.1%
経常利益	Ordinary Income	1,947,834	2,269,884	2,097,437	2,124,616	1,008,822	779,705	551,466	1,516,721	1,222,969	△ 293,751
売上高経常利益率 (%)	Ordinary Income to Net Sales (%)	4.5%	4.7%	4.3%	4.4%	2.2%	1.8%	1.5%	4.0%	3.0%	△ 1.0%
親会社株主に帰属する当期純利益	Net Income Attributable to Owners of Parent	1,156,438	1,467,551	1,392,751	1,479,251	639,794	408,439	△ 1,645,553	865,873	456,934	△ 408,938
売上高当期純利益率 (%)	Net Income to Net Sales (%)	2.7%	3.1%	2.9%	3.1%	1.4%	0.9%	△ 4.5%	2.3%	1.1%	△ 1.2%
総資産	Total Assets	41,524,305	47,541,539	48,642,350	49,599,005	46,875,311	45,654,169	43,917,397	43,003,962	42,877,892	△ 126,069
純資産	Net Assets	14,882,646	15,549,429	16,502,639	17,530,746	17,246,899	16,822,368	15,446,126	16,042,017	16,175,337	133,320
自己資本利益率 (%)	Return on Equity <ROE> (%)	8.0%	9.6%	8.7%	8.7%	3.7%	2.4%	△ 10.2%	5.5%	2.8%	△ 2.7%
総資産利益率 (%)	Return on Assets <ROA> (%)	2.8%	3.3%	2.9%	3.0%	1.3%	0.9%	△ 3.7%	2.0%	1.1%	△ 0.9%

安定性 Stability



決算期	Fiscal Year	2015/3	2016/3	2017/3	2018/3	2019/3	2020/3	2021/3	2022/3	2023/3	増減
流動比率 (%)	Current Ratio (%)	132.2%	129.4%	134.3%	143.7%	148.1%	151.5%	157.3%	148.9%	141.8%	△7.1%
固定比率 (%)	Fixed Assets Ratio (%)	146.6%	157.8%	147.1%	133.4%	128.6%	125.4%	122.3%	122.7%	126.1%	3.4%
手元流動性比率 (倍)	Current (Quick) Ratio (Times)	2.66	2.88	3.10	3.42	3.43	3.80	4.79	4.11	3.13	△ 0.98
インタレスト・カバレッジ・レシオ (倍)	Interest Coverage Ratio (Times)	11.68	14.17	11.31	11.04	7.57	12.78	8.07	15.32	5.88	△ 9.43
自己資本比率 (%)	Equity Ratio (%)	35.8%	32.6%	33.8%	35.2%	36.6%	36.7%	35.0%	37.2%	37.6%	0.4%

経営指標 (連結)

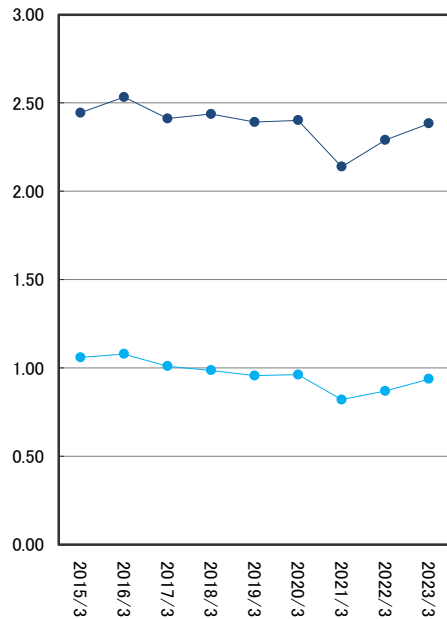
SELECTED FINANCIAL DATA (Consolidated)

生産性・効率性

Productivity and Efficiency

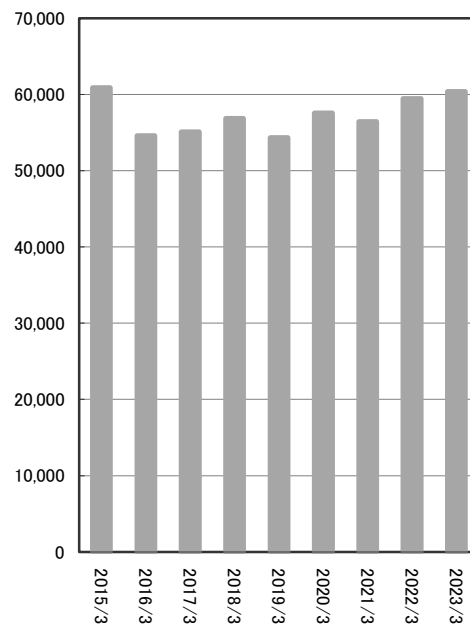
- 総資産回転率 ● 有形固定資産回転率
- Total Assets Turnover
- Tangible Fixed Assets Turnover

(回) (Times)



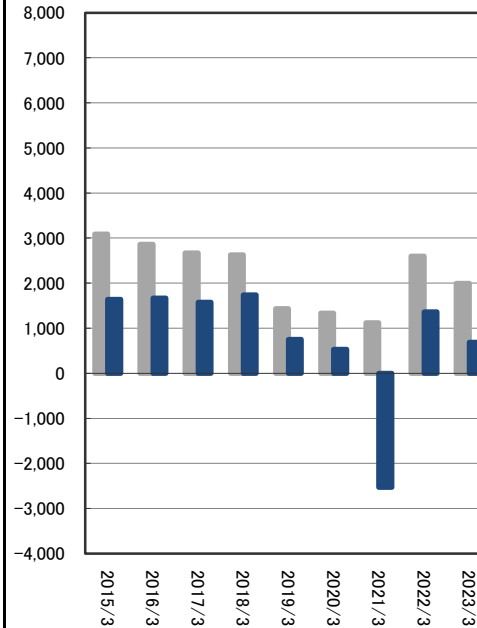
- 従業員一人当たり売上高
- Net Sales per Employee

(千円) (Thousand Yen)



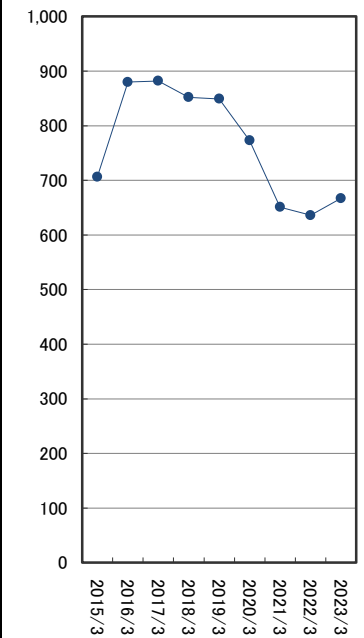
- 従業員一人当たり営業利益 ■ 当期純利益
- Operating Income per Employee
- Net Income per Employee

(千円) (Thousand Yen)



- 従業員数
- Number of Employees

(人) (Persons)



(千円) (Thousand Yen)

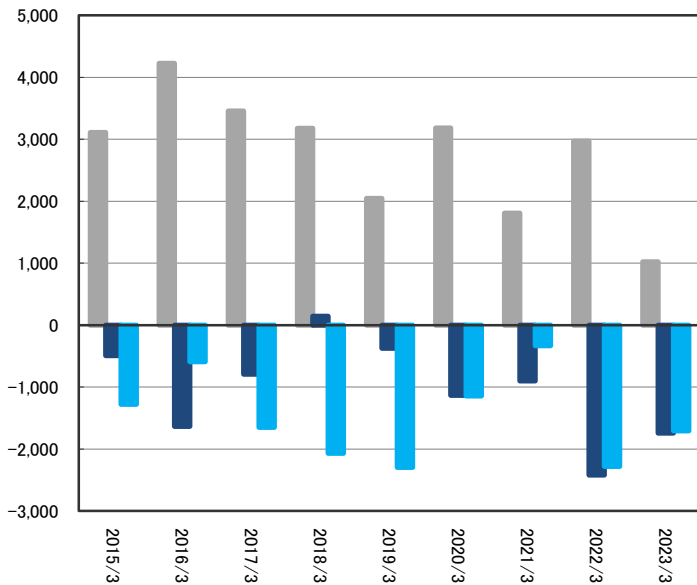
決算期	Fiscal Year	2015/3	2016/3	2017/3	2018/3	2019/3	2020/3	2021/3	2022/3	2023/3	増減
総資産回転率 (回)	Total Assets Turnover (Times)	1.06	1.08	1.01	0.99	0.96	0.96	0.82	0.87	0.94	0.07
有形固定資産回転率 (回)	Tangible Fixed Assets Turnover (Times)	2.44	2.53	2.41	2.44	2.39	2.40	2.14	2.29	2.38	0.09
従業員一人当たり売上高	Net Sales per Employee	60,892	54,566	55,066	56,840	54,325	57,557	56,436	59,427	60,365	937
従業員一人当たり営業利益	Operating Income per Employee	3,092	2,863	2,672	2,626	1,430	1,334	1,121	2,597	1,995	△ 602
従業員一人当たり当期純利益	Net Income per Employee	1,638	1,667	1,579	1,736	753	528	△ 2,527	1,361	685	△ 676
従業員数 (人)	Number of Employees (Persons)	706	880	882	852	849	773	651	636	667	31

経営指標 (連結)

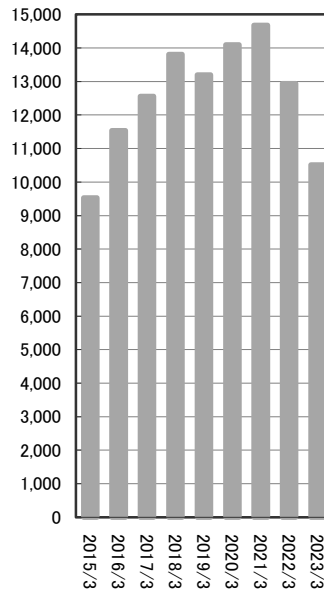
SELECTED FINANCIAL DATA (Consolidated)

キャッシュ・フロー Cash Flows

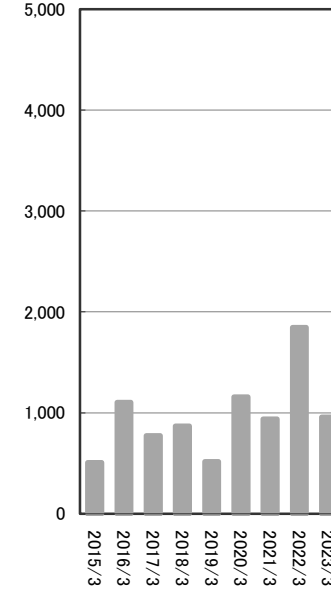
■ 営業活動によるCF ■ 投資活動によるCF ■ 財務活動によるCF
 ■ Cash Flows from Operating Activities
 ■ Cash Flows from Investing Activities
 ■ Cash Flows from Financing Activities
 (百万円) (Millions of Yen)



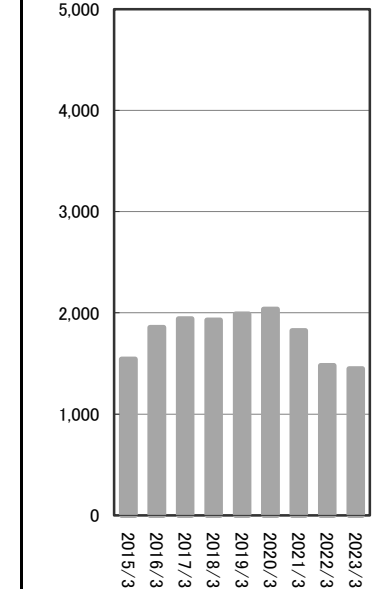
■ 現金及び現金同等物の期末残高
 ■ Cash and Cash Equivalents
 at End of Year
 (百万円) (Millions of Yen)



■ 設備投資額
 ■ Capital Expenditures
 (百万円) (Millions of Yen)



■ 減価償却費
 ■ Depreciation and Amortization
 (百万円) (Millions of Yen)



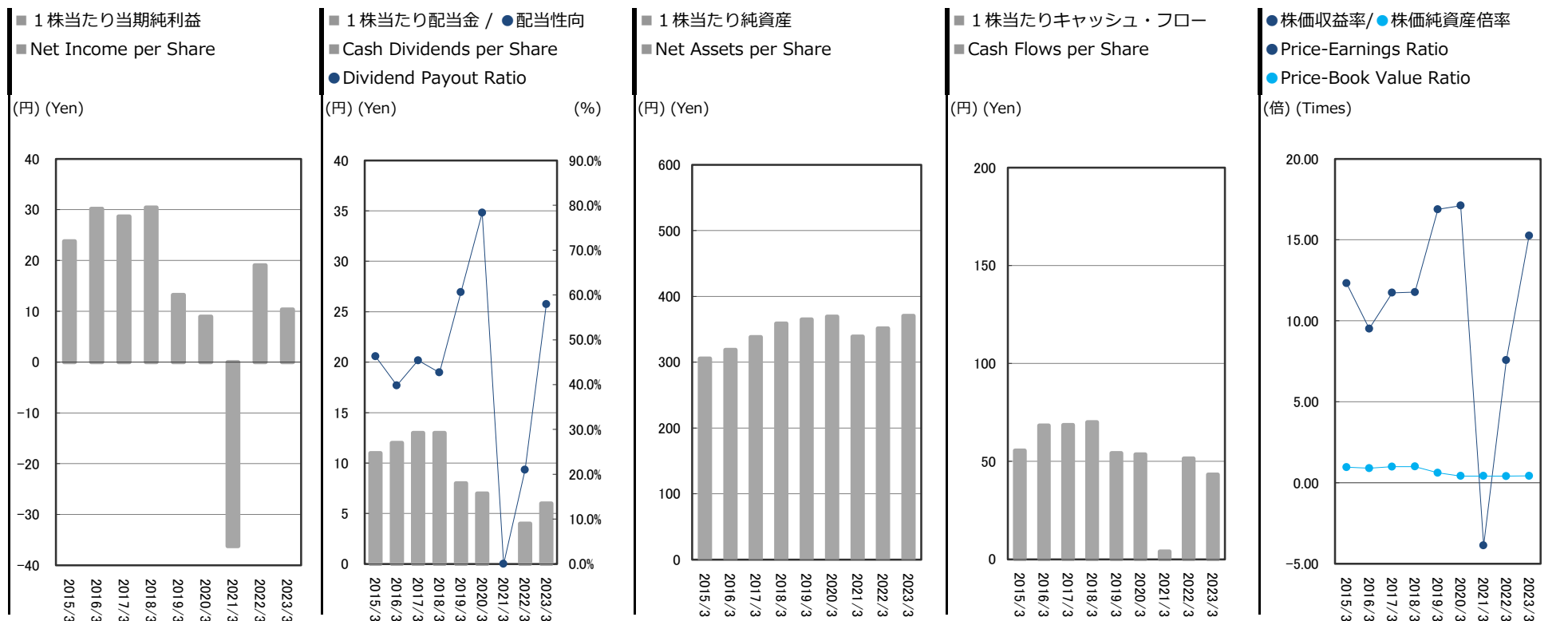
(千円) (Thousand Yen)

決算期 Fiscal Year	2015/3	2016/3	2017/3	2018/3	2019/3	2020/3	2021/3	2022/3	2023/3	増減
営業活動によるキャッシュ・フロー Cash Flows from Operating Activities	3,110,320	4,227,722	3,455,281	3,178,337	2,047,269	3,179,968	1,807,471	2,968,544	1,021,028	△ 1,947,516
投資活動によるキャッシュ・フロー Cash Flows from Investing Activities	△ 492,723	△ 1,633,885	△ 790,800	144,815	△ 372,696	△ 1,133,922	△ 898,215	△ 2,420,811	△ 1,743,733	677,077
財務活動によるキャッシュ・フロー Cash Flows from Financing Activities	△ 1,275,623	△ 588,232	△ 1,646,953	△ 2,067,830	△ 2,292,767	△ 1,145,065	△ 330,015	△ 2,279,350	△ 1,706,182	573,168
現金及び現金同等物の期末残高 Cash and Cash Equivalents at End of Year	9,534,258	11,539,862	12,557,389	13,812,712	13,194,517	14,095,497	14,674,737	12,943,119	10,514,232	△ 2,428,886
設備投資額 Capital Expenditures	507,155	1,103,748	773,880	870,148	517,511	1,158,254	938,503	1,844,771	957,425	△ 887,346
減価償却費 Depreciation and Amortization	1,543,788	1,856,826	1,939,861	1,928,171	1,988,780	2,037,011	1,824,200	1,478,163	1,449,428	△ 28,734

経営指標 (連結)

SELECTED FINANCIAL DATA (Consolidated)

投資指標 Per Share Data and Others



決算期	Fiscal Year	2015/3	2016/3	2017/3	2018/3	2019/3	2020/3	2021/3	2022/3	2023/3	増減
1株当たり当期純利益	Net Income per Share <EPS>	23.78	30.18	28.64	30.42	13.21	8.94	△ 36.24	19.03	10.36	△ 8.67
1株当たり配当金	Cash Dividends per Share	11.00	12.00	13.00	13.00	8.00	7.00	0.00	4.00	6.00	2.00
配当性向 (%)	Dividend Payout Ratio (%)	46.3%	39.8%	45.4%	42.7%	60.6%	78.3%	0.0%	21.0%	57.9%	36.9%
1株当たり純資産	Net Assets per Share	305.62	318.84	338.11	358.76	364.86	369.27	338.71	351.34	370.55	19.21
1株当たりキャッシュ・フロー	Cash Flows per Share	55.53	68.36	68.53	70.06	54.27	53.55	3.93	51.50	43.21	△ 8.30
株価収益率 (倍)	Price-Earnings Ratio <PER> (Times)	12.32	9.51	11.73	11.77	16.88	17.11	△ 3.86	7.57	15.26	7.69
株価純資産倍率 (倍)	Price-Book Value Ratio <PBR> (Times)	0.96	0.90	0.99	1.00	0.61	0.41	0.41	0.41	0.43	0.02
期末株価 (円)	Stock Price (Yen)	293.00	287.00	336.00	358.00	223.00	153.00	140.00	144.00	158.00	14.00

財務諸表（連結）

FINANCIAL STATEMENTS (Consolidated)

貸借対照表 Balance Sheets

(千円) (Thousand Yen)

決算期	Fiscal Year		2019/ 3	2020/ 3	2021/ 3	2022/ 3	2023/ 3
資産の部		Assets					
I 流動資産		I Current Assets					
1	現金及び預金	1 Cash and Deposits	13,194,517	14,095,497	14,674,737	12,943,119	10,514,232
2	受取手形及び売掛金	2 Notes Receivable-Trade	9,041,029	7,660,179	8,022,036	—	—
3	受取手形	3 Accounts Receivable-Trade	—	—	—	1,333,175	871,216
4	売掛金	4 Notes and Accounts Receivable-Trade	—	—	—	6,349,639	7,117,573
5	電子記録債権	5 Electronically Recorded Monetary Claims - Operating	1,174,949	1,552,525	1,027,907	1,185,920	1,782,693
6	棚卸資産	6 Inventories	1,174,322	1,157,046	1,087,264	1,241,124	1,319,567
7	繰延税金資産	7 Deferred Tax Assets	—	—	—	—	—
8	その他	8 Other	257,091	199,335	315,827	339,553	944,883
	貸倒引当金	Allowance for Doubtful Accounts	△ 30,861	△ 18,900	△ 19,712	△ 18,183	△ 17,930
	流動資産合計	Total Current Assets	24,811,048 52.9%	24,645,684 54.0%	25,108,060 57.2%	23,374,350 54.4%	22,532,235 52.5%
II 固定資産		II Non-Current Assets					
1 有形固定資産		1 Property, Plant and Equipment					
(1)	建物及び構築物	(1) Buildings and Structures	6,517,990	6,318,061	6,124,420	5,725,520	5,791,840
(2)	機械装置及び運搬具	(2) Machinery, Equipment and Vehicles	1,399,047	1,258,523	1,097,709	1,118,378	1,175,697
(3)	土地	(3) Land	5,806,485	6,149,853	6,017,007	7,329,475	7,466,899
(4)	リース資産	(4) Leased Assets	4,885,223	4,004,448	2,623,718	2,396,762	2,099,174
(5)	建設仮勘定	(5) Construction in Progress	84,680	204,490	37,825	21,590	187,653
(6)	その他	(6) Other	177,292	239,734	272,291	247,775	228,718
	有形固定資産合計	Total Property, Plant and Equipment	18,870,720 40.3%	18,175,111 39.8%	16,172,973 36.8%	16,839,501 39.2%	16,949,984 39.5%
2 無形固定資産		2 Intangible Assets					
(1)	のれん	(1) Goodwill	1,246,659	1,041,072	269,336	541,406	962,017
(2)	その他	(2) Other	100,667	165,188	199,618	216,011	284,449
	無形固定資産合計	Total Intangible Assets	1,347,326 2.9%	1,206,261 2.6%	468,954 1.1%	757,418 1.8%	1,246,466 2.9%
3 投資その他の資産		3 Investments and Other Assets					
(1)	投資有価証券	(1) Investment Securities	1,264,013	1,029,299	1,561,915	1,531,940	1,626,157
(2)	繰延税金資産	(2) Deferred Tax Assets	280,202	328,397	353,463	269,071	253,433
(3)	退職給付に係る資産	(3) Retirement Benefit Asset	16,853	14,677	11,541	17,807	18,786
(4)	その他	(4) Other	305,991	275,471	261,220	233,999	220,818
	貸倒引当金	Allowance for Doubtful Accounts	△ 20,844	△ 20,734	△ 20,733	△ 20,425	△ 20,416
	投資その他の資産合計	Total Investments and Other Assets	1,846,216 3.9%	1,627,111 3.6%	2,167,408 4.9%	2,032,394 4.7%	2,148,970 5.0%
	固定資産合計	Total Non-Current Assets	22,064,262 47.1%	21,008,485 46.0%	18,809,337 42.8%	19,629,313 45.6%	20,345,421 47.4%
III 繰延資産		III Deferred Assets					
	創立費	Organization Expenses	—	—	—	298	234
	繰延資産合計	Total Deferred Assets	—	—	—	298	234 0.0%
	資産合計	Total Assets	46,875,311 100%	45,654,169 100%	43,917,397 100%	43,003,962 100%	42,877,892 100%

財務諸表 (連結)

FINANCIAL STATEMENTS (Consolidated)

貸借対照表 Balance Sheets

(千円) (Thousand Yen)

決算期	Fiscal Year	2019/ 3	2020/ 3	2021/ 3	2022/ 3	2023/ 3	
負債の部		Liabilities					
I 流動負債		I Current Liabilities					
1	支払手形及び買掛金	1 Notes and Accounts Payable-Trade	4,978,578	4,262,752	5,116,539	4,359,292	4,174,448
2	電子記録債務	2 Electronically Recorded Obligations - Operating	4,499,563	4,689,242	3,735,672	4,210,577	4,705,713
3	短期借入金	3 Short-Term Borrowings	450,000	450,000	210,000	—	—
4	1年内返済予定の長期借入金	5 Current Portion of Long-Term Borrowings	3,969,996	4,262,560	4,625,142	4,591,236	4,680,440
5	リース債務	6 Lease Obligations	1,236,121	1,052,195	961,484	808,513	702,286
6	未払法人税等	7 Income Taxes Payable	67,649	141,170	91,834	239,900	66,232
7	賞与引当金	8 Provision for Bonuses	377,042	325,002	189,218	212,564	223,107
8	その他	9 Other	1,173,484	1,083,166	1,028,158	1,279,965	1,340,871
流動負債合計		Total Current Liabilities	16,752,435 35.7%	16,266,089 35.6%	15,958,051 36.3%	15,702,049 36.5%	15,893,099 37.1%
II 固定負債		II Non-Current Liabilities					
1	社債	1 Bonds Payable	—	—	—	—	50,000
2	長期借入金	2 Long-Term Borrowings	7,486,896	8,015,281	8,805,664	8,260,850	8,044,746
3	リース債務	3 Lease Obligations	4,330,435	3,531,874	2,825,203	2,095,675	1,757,154
4	繰延税金負債	4 Deferred Tax Liabilities	25,898	21,968	17,319	2,590	10,719
5	退職給付に係る負債	5 Retirement Benefit Liability	958,849	931,967	809,677	848,042	893,504
6	資産除去債務	6 Asset Retirement Obligations	33,328	33,940	34,564	35,200	35,847
7	その他	7 Other	40,568	30,679	20,791	17,535	17,483
固定負債合計		Total Non-Current Liabilities	12,875,976 27.5%	12,565,711 27.5%	12,513,220 28.5%	11,259,894 26.2%	10,809,455 25.2%
負債合計		Total Liabilities	29,628,412 63.2%	28,831,801 63.2%	28,471,271 64.8%	26,961,944 62.7%	26,702,554 62.3%
純資産の部		Net Assets					
I 株主資本		I Shareholders' Equity					
1	資本金	1 Share Capital	3,344,545	3,359,027	3,364,862	3,374,740	3,374,740
2	資本剰余金	2 Capital Surplus	3,338,675	3,353,157	3,358,992	3,368,870	3,368,870
3	利益剰余金	3 Retained Earnings	10,295,775	10,357,448	8,553,158	9,327,955	9,541,428
4	自己株式	4 Treasury Shares	△ 355,862	△ 700,023	△ 700,023	△ 700,023	△ 998,230
株主資本合計		Total Shareholders' Equity	16,623,133 35.5%	16,369,609 35.9%	14,576,989 33.2%	15,371,541 35.7%	15,286,807 35.7%
II その他の包括利益累計額		II Accumulated Other Comprehensive Income					
	その他の有価証券評価差額金	Valuation Difference on Available-for-Sale Securities	591,364	410,235	779,645	604,348	819,632
	退職給付に係る調整累計額	Remeasurements of Defined Benefit Plans	△ 63,579	△ 31,977	28,721	23,583	26,776
その他の包括利益累計額合計		Total Accumulated Other Comprehensive Income	527,784 1.1%	378,258 0.8%	808,367 1.8%	627,931 1.5%	846,409 2.0%
III 新株予約権		III Share Acquisition Rights					
IV 非支配株主持分		IV Non-Controlling Interests					
純資産合計		Total Net Assets	17,246,899 36.8%	16,822,368 36.8%	15,446,126 35.2%	16,042,017 37.3%	16,175,337 37.7%
負債純資産合計		Total Liabilities and Net Assets	46,875,311 100%	45,654,169 100%	43,917,397 100%	43,003,962 100%	42,877,892 100%

財務諸表 (連結)

FINANCIAL STATEMENTS (Consolidated)

損益計算書 Statements of Income

(千円) (Thousand Yen)

決算期	Fiscal Year		2019/ 3	2020/ 3	2021/ 3	2022/ 3	2023/ 3					
I 売上高	I Net Sales		46,121,950	100%	44,491,772	100%	36,739,929	100%	37,795,726	100%	40,263,547	100%
II 売上原価	II Cost of Sales		40,446,228	87.7%	39,426,508	88.6%	32,740,844	89.1%	33,077,421	87.5%	35,715,692	88.7%
売上総利益	Gross Profit		5,675,721		5,065,263		3,999,084		4,718,304		4,547,854	
III 販売費及び一般管理費	III Selling, General and Administrative Expenses											
1 運賃	1 Freight Costs		1,080,202		1,029,855		869,860		783,840		725,331	
2 給料及び手当	2 Salaries and Allowances		1,232,461		1,113,659		924,244		850,451		838,261	
3 賞与引当金繰入額	3 Provision for Bonuses		140,644		107,644		58,409		60,937		62,496	
4 退職給付費用	4 Retirement Benefit Expenses		51,077		45,518		40,147		40,980		30,752	
5 貸倒引当金繰入額	5 Provision of Allowance for Doubtful Accounts		△ 9,563		△ 9,612		811		△ 1,836		△ 270	
6 のれん償却額	6 Amortization of Goodwill		205,586		205,586		151,667		117,212		135,271	
7 その他	7 Other		1,760,411		1,541,088		1,223,871		1,214,644		1,425,196	
営業利益	Operating Income		1,214,900	2.6%	1,031,523	2.3%	730,072	2.0%	1,652,074	4.4%	1,330,814	3.3%
IV 営業外収益	IV Non-Operating Income											
1 受取配当金	1 Dividends Income		27,443		28,987		31,536		33,839		51,661	
2 産業立地交付金	2 Subsidy for Industrial Estate		25,895		9,941		8,568		27,218		9,377	
3 受取保険金	3 Insurance Claim Income		—		—		—		—		8,000	
4 その他	4 Other		15,631		9,642		11,488		8,894		9,279	
V 営業外費用	V Non-Operating Expenses											
1 支払利息	1 Interest Expenses		270,152		246,992		223,583		194,909		173,368	
2 その他	2 Other		4,895		53,397		6,614		10,395		12,794	
経常利益	Ordinary Income		1,008,822	2.2%	779,705	1.8%	551,466	1.5%	1,516,721	4.0%	1,222,969	3.0%
VI 特別利益	VI Extraordinary Income											
1 固定資産売却益	1 Gain on Sales of Non-Current Assets		1,166		11,293		2,308		95,627		1,970	
2 投資有価証券売却益	2 Gain on Sales of Investment Securities		86,899		—		—		—		—	
3 新株予約権戻入益	3 Gain on Reversal of Share Acquisition Rights		9,440		86		2,571		117		1,881	
4 その他	4 Other		—		—		49		700		—	
VII 特別損失	VII Extraordinary Losses											
1 固定資産売却損	1 Loss on Sales of Non-Current Assets		—		4,094		—		—		1,417	
2 固定資産除却損	2 Loss on Retirement of Non-current Assets		35,321		32,062		29,945		104,991		13,300	
3 減損損失	3 Impairment Loss		—		23,118		—		104,433		—	
4 事業構造改善費用	4 Business Restructuring Expenses		—		—		2,251,730		—		—	
5 役員退職慰労金	5 Retirement Benefits for Directors		—		—		—		—		311,000	
6 その他	6 Other		1,850		2,833		—		34		67,564	
税金等調整前当期純利益	Profit Before Income Taxes		1,069,157	2.3%	728,976	1.6%	△ 1,725,278	-4.7%	1,403,706	3.7%	833,539	2.1%
法人税、住民税及び事業税	Income Taxes-Current		424,525		322,414		128,906		371,547		199,634	
法人税等調整額	Income Taxes-Deferred		4,837		△ 1,877		△ 208,631		165,752		175,512	
当期純利益	Profit		639,794	1.4%	408,439	0.9%	△ 1,645,553	-4.5%	866,406	2.3%	458,392	1.1%
非支配株主に帰属する当期純利益	Profit Attributable to Non-Controlling Interests		—		—		—		532		1,458	
VIII 親会社株主に帰属する当期純利益	VIII Profit Attributable to Owners of Parent		639,794	1.4%	408,439	0.9%	△ 1,645,553	-4.5%	865,873	2.3%	456,934	1.1%

財務諸表 (連結)

FINANCIAL STATEMENTS (Consolidated)

キャッシュ・フロー計算書 Statements of Cash Flows

(千円) (Thousand Yen)

決算期	Fiscal Year	2019/ 3	2020/ 3	2021/ 3	2022/ 3	2023/ 3
I 営業活動によるキャッシュ・フロー	I Cash Flows from Operating Activities					
税金等調整前当期純利益	Profit Before Income Taxes	1,069,157	728,976	△ 1,725,278	1,403,706	833,539
減価償却費	Depreciation	1,988,780	2,037,011	1,824,200	1,478,163	1,449,428
のれん償却額	Amortization of Goodwill	205,586	205,586	151,667	117,212	135,271
産業立地交付金	Subsidy for Industrial Estate	△ 25,895	△ 9,941	△ 8,568	△ 27,218	△ 9,377
受取保険金	Insurance Claim Income	—	—	—	—	△ 8,000
貸倒引当金の増減額(△は減少)	Increase (Decrease) in Allowance for Doubtful Accounts	△ 11,405	△ 12,071	811	△ 1,836	△ 270
賞与引当金の増減額(△は減少)	Increase (Decrease) in Provision for Bonuses	△ 1,340	△ 52,040	△ 135,783	22,845	△ 1,257
退職給付に係る負債の増減額(△は減少)	Increase (Decrease) in Retirement Benefit Liability	64,353	18,667	△ 34,802	30,959	50,064
受取利息及び受取配当金	Interest and Dividends Income	△ 27,500	△ 29,037	△ 31,571	△ 33,876	△ 52,230
支払利息	Interest Expenses	270,152	246,992	223,583	194,909	173,368
固定資産売却損益(△は益)	Loss (Gain) on Sales of Non-Current Assets	△ 1,166	△ 7,198	△ 2,308	△ 95,627	△ 446
固定資産除却損	Loss on Retirement of Non-Current Assets	35,321	32,062	29,945	104,991	13,300
減損損失	Impairment Loss	—	23,118	—	104,433	—
事業構造改善費用	Business Restructuring Expenses	—	—	2,251,730	—	—
役員退職慰労金	Retirement Benefits for Directors	—	—	—	—	311,000
投資有価証券売却損益(△は益)	Loss (Gain) on Sales of Investment Securities	△ 86,899	—	—	—	—
売上債権の増減額(△は増加)	Decrease (Increase) in Trade Receivables	959,955	1,003,273	162,761	197,031	△ 782,345
棚卸資産の増減額(△は増加)	Decrease (Increase) in Inventories	△ 12,304	17,276	69,782	△ 141,714	△ 59,522
仕入債務の増減額(△は減少)	Increase (Decrease) in Trade Payables	△ 1,282,088	△ 526,146	△ 99,782	△ 300,939	310,181
未収入金の増減額(△は増加)	Decrease (Increase) in Accounts Receivable-Other	△ 18,657	38,229	△ 78,300	104,317	△ 35,400
未払金の増減額(△は減少)	Increase (Decrease) in Accounts Payable-Other	△ 43,763	△ 86,917	△ 38,516	9,381	3,822
未払費用の増減額(△は減少)	Increase (Decrease) in Accrued Expenses	7,643	△ 31,272	△ 62,780	49,783	△ 51,257
未払消費税等の増減額(△は減少)	Increase (Decrease) in Accrued Consumption Taxes	112,431	56,805	△ 62,790	168,796	△ 74,039
前払費用の増減額(△は増加)	Decrease (Increase) in Prepaid Expenses	△ 13,513	7,810	△ 9,550	10,139	—
破産更生債権等の増減額(△は増加)	Decrease (Increase) in Distressed Receivables	1,456	110	1	8	9
その他	Other, Net	2,628	△ 27,020	△ 52,979	70,255	△ 168,859
小計	Subtotal	3,192,931	3,634,273	2,371,470	3,465,723	2,036,977
利息及び配当金の受取額	Interest and Dividends Income Received	28,680	29,057	31,571	33,876	52,230
利息の支払額	Interest Paid	△ 270,565	△ 248,745	△ 224,108	△ 193,809	△ 173,517
法人税等の支払額	Income Taxes Paid	△ 903,777	△ 234,617	△ 202,541	△ 337,245	△ 902,662
その他	Other, Net	—	—	△ 168,921	—	8,000
営業活動によるキャッシュ・フロー	Net Cash Provided by (Used in) Operating Activities	2,047,269	3,179,968	1,807,471	2,968,544	1,021,028

財務諸表（連結） FINANCIAL STATEMENTS (Consolidated)

キャッシュ・フロー計算書 Statements of Cash Flows

(千円) (Thousand Yen)

決算期	Fiscal Year	2019/ 3	2020/ 3	2021/ 3	2022/ 3	2023/ 3
II 投資活動によるキャッシュ・フロー		II Cash Flows from Investing Activities				
有形固定資産の取得による支出	Purchase of Property, Plant and Equipment	△ 491,911	△ 1,070,764	△ 887,106	△ 1,728,033	△ 821,879
無形固定資産の取得による支出	Purchase of Intangible Assets	△ 25,599	△ 87,489	△ 51,396	△ 116,738	△ 135,545
投資有価証券の取得による支出	Purchase of Investment Securities	△ 51,114	△ 10,630	△ 11,076	△ 220,866	△ 11,989
投資有価証券の売却による収入	Proceeds from Sales of Investment Securities	115,256	—	—	—	—
出資金の回収による収入	Proceeds from Divestments	—	—	—	—	10,170
産業立地交付金の受取による収入	Proceeds from Subsidies for Industrial Estate	25,895	9,941	8,568	27,218	9,377
連結の範囲の変更を伴う 子会社株式の取得による支出	Purchase of Shares of Subsidiaries Resulting in Change in Scope of Consolidation	—	—	—	△ 504,706	△ 733,370
役員に対する貸付による支出	Payments of Loans Receivable from Employers	—	—	—	—	△ 67,015
その他	Other, Net	54,776	25,021	42,796	122,315	6,520
投資活動によるキャッシュ・フロー	Net Cash Provided by (Used in) Investing Activities	54,776	△ 1,133,922	△ 898,215	△ 2,420,811	△ 1,743,733
III 財務活動によるキャッシュ・フロー		III Cash Flows from Financing Activities				
短期借入金の純増減額（△は減少）	Net Increase (Decrease) in Short-Term Borrowings	—	—	△ 240,000	△ 210,000	—
長期借入れによる収入	Proceeds From Long-Term Loans Borrowings	4,200,000	5,400,000	6,150,000	4,500,000	4,800,000
長期借入金の返済による支出	Repayment of Long-Term Borrowings	△ 4,449,325	△ 4,579,051	△ 4,997,035	△ 5,098,696	△ 5,112,990
配当金の支払額	Dividends Paid	△ 511,111	△ 347,154	△ 159,467	△ 91,303	△ 243,306
リース債務の返済による支出	Repayments of Lease Obligations	△ 1,177,039	△ 1,264,966	△ 1,073,695	△ 1,362,101	△ 832,382
長期設備未払金の支払いによる支出	Payments for Accrued Amount Payable for Capital Investment	△ 9,888	△ 9,888	△ 9,888	△ 11,365	—
自己株式の取得による支出	Purchase of Treasury Stock	—	—	—	—	△ 298,206
その他	Other, Net	△ 345,403	△ 344,006	70	△ 5,885	△ 19,296
財務活動によるキャッシュ・フロー	Net Cash Provided by (Used in) Financing Activities	△ 2,292,767	△ 1,145,065	△ 330,015	△ 2,279,350	△ 1,706,182
IV 現金及び現金同等物の増減額（△は減少）	IV Net Increase (Decrease) in Cash and Cash Equivalents	△ 618,194	900,980	579,239	△ 1,731,617	△ 2,428,886
V 現金及び現金同等物の期首残高	V Cash and Cash Equivalents at Beginning of Period	13,812,712	13,194,517	14,095,497	14,674,737	12,943,119
VI 現金及び現金同等物の期末残高	VI Cash and Cash Equivalents at End of Period	13,194,517	14,095,497	14,674,737	12,943,119	10,514,232

■ Corporate Information

Trade Name	KYORITSU CO.,LTD.
Established	May 1st, 1981
Capital	3,374,740,000 Yen
Number of Full-time Employees	667
Stock Exchange Listed	Standard Market of the Tokyo Stock Exchange [7795]
Number of Shareholders	9,459
Head Office	36-1, Shimizu-cho, Itabashi-ku, Tokyo 03-5248-5550
Businesses	Printing Business Process Outsourcing Digital Environment

■ 会社概要

商号	株式会社KYORITSU
設立	1981年5月1日
資本金	33億7,474万円
従業員数	667名
上場取引所	東京証券取引所 スタンダード市場 [7795]
株主数	9,459名
本社	東京都板橋区清水町36番1号 03-5248-5550
事業の内容	印刷事業 BPO事業 デジタル事業 環境事業



■ Officers

President	Yutaka Kageyama
Director	Masahide Tasaka
Outside Director	Michio Fujimoto
Outside Director	Masahiko Kamei
Standing Outside Auditor	Kenzo Kawajiri
Outside Auditor	Hidekazu Kubokawa
Outside Auditor	Keiichiro Nakamura

■ 役員

代表取締役社長	景山	豊
取締役	田坂	優英
社外取締役	藤本	三千夫
社外取締役	亀井	雅彦
常勤社外監査役	川尻	建三
社外監査役	窪川	秀一
社外監査役	中村	恵一郎